

6400 S. Lewiston Way  
Aurora, CO 80016  
Phone: (303)269-8000  
Fax: (303)766-2240  
www.regisjesuit.com  
School Code: 060435

**Founded:** 1877  
**Type:** Jesuit, Roman Catholic, Private, College Preparatory  
**Enrollment:** 936 Boys, 199 Seniors  
**Faculty:** 128 Faculty, 68 Master's, 5 Ph.D.'s

**President**

Dave Card, MPA

**Administration**

**Principal**

Alan Carruthers, AD Ed.

**Dean of Students**

Michael J. Doherty, MA

**Academic Assistant**

**Principal**

Ken E. Bostdorff, M Ed.

**Assistant Principal for**

**Faculty and Curriculum**

Craig M. Rogers, MA

**College Counselors**

Monica Huggins, (A-D)  
mhuggins@regisjesuit.com

Sarah Hatfield, (E-J)  
shatfield@regisjesuit.com

Mike Delaney, (K-M)  
mdelaney@regisjesuit.com

Mark Giesmann, (N-Sm)  
mgiesmann@regisjesuit.com

Laura Hall, (Sn-Z)  
lhall@regisjesuit.com

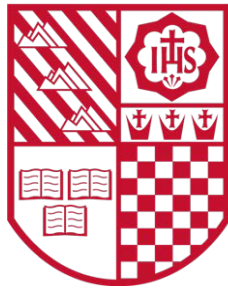
**College Counseling**

**Assistant**

Bonnie Stanford  
303.269.8121  
bstanford@regisjesuit.com

**Registrar**

Tina Schaaf  
tschaaf@regisjesuit.com



# REGIS JESUIT HIGH SCHOOL

## 2016 – 2017 School Profile

### BOYS DIVISION

**Mission**

Regis Jesuit High School—a Catholic educational community—engages the gifts of young men and women in a single-gender environment, fosters faith in Jesus Christ and promotes justice and mercy, develops critical minds and nurtures compassionate hearts to serve others—all for the greater glory of God.

**Service**

The service program builds upon itself so that each year students are encouraged to expand and deepen their commitment to be *Men with and for Others*. Thirty hours of service are distributed during freshman and sophomore years. Juniors and seniors participate in a two-week service project, completing sixty or more hours of service each year. To further explore the school's commitment to social justice, students complete an additional twenty-five hours of direct service with the poor and marginalized.

**Academic Program**

Admission to Regis Jesuit High School is based on previous academic record, entrance exam scores, and teacher recommendations. All students follow a rigorous academic track of college preparatory classes. The Theology program at Regis Jesuit is an integral part of our school's identity, as it embodies our mission to develop the entire person.

**Discipline**

Disciplinary matters are internal school issues. It is our policy to refrain from commentary on student disciplinary matters. Please contact the student directly.

**Graduation Requirements:**

English	4.0 credits	Social Studies	3.0 credits	Computer Science	0.5 credits
Mathematics	4.0 credits	World Languages	2.0 credits	Humanities & Arts	0.5 credits
Theology	4.0 credits	Physical Education	1.0 credits	Electives	5.5 credits
Science	3.0 credits	Communications	0.5 credits	Community Service	175 hours

**Advanced Placement and Honors Classes:**

AP courses are open to students meeting certain prerequisites. Students in AP courses are not required to take the AP exams. Honors courses require the students to meet objectives higher than those of non-honors courses.

<p><b><u>Advanced Placement</u></b></p> <p><b>Art</b> AP Studio Art: 2D Design AP Studio Art: Drawing</p> <p><b>English</b> AP English Language and Composition AP English Literature and Composition</p> <p><b>Math</b> AP Calculus AB AP Calculus BC AP Statistics Calculus 3</p> <p><b>Science</b> AP Biology AP Chemistry AP Physics 1 AP Physics 2 AP Physics C</p>	<p><b><u>Advanced Placement</u></b></p> <p><b>Social Studies</b> AP European History AP U.S. History AP World History</p> <p><b>World Language</b> AP Chinese Language and Culture AP French Language AP Latin AP Spanish Language and Culture AP Spanish Literature and Culture</p>	<p><b><u>Honors Classes</u></b></p> <p>Honors English 1 Honors British Literature Honors Algebra 1 Honors Geometry Honors Algebra 2/Trig Introduction Calculus Honors Biology Honors Chemistry Honors French 2 Honors French 3 Honors Latin 2 Honors Latin 3 Honors Spanish 2 Honors Spanish 3</p>
--	--	--

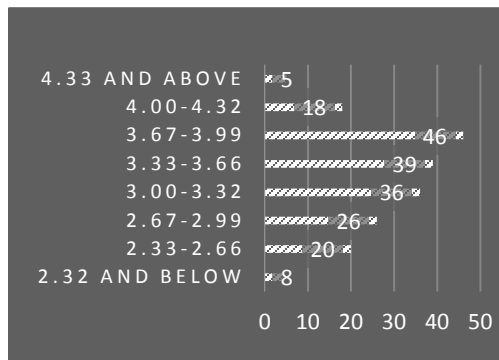
**Accreditation:** AdvancEd

**Memberships:** Jesuit Schools Network, National Catholic Education Association, Jesuit High School College Counselors Association, Colorado Council on High School/College Relations, National Association of College Admissions Counselors

**Rank**

Regis Jesuit does not rank its students. Instead, we provide this chart with information about the 6<sup>th</sup> semester grades for the 199 members of the Class of 2017.

**6<sup>th</sup> Semester GPA's (Wtd)**



**Grade Point Average**

Regular and Honors classes use this 4.0 scale: AP classes are weighted by one point.

A+(97-100)=4.33	A(93-96)=4.0	A-(90-92)=3.67
B+(87-89)= 3.33	B(83-86)=3.0	B-(80-82)=2.67
C+(77-79)= 2.33	C(73-76)=2.0	C-(70-72)=1.67
D+(67-69)= 3.33	D(63-66)=1.0	D-(60-62)=0.67
F (00-59)= 0.00	K = F for 1 <sup>st</sup> semester	

**Advanced Placement Testing:** Last year, 317 students took 609 AP tests. 86% of those taking an AP test scored 3, 4 or 5 on the exam.

**Assessment:** Test scores reflect all testing results, not just the highest test scores. Test scores are mean test scores.

SAT Scores				ACT Scores						National Merit				
	Critical Reading	Math	Writing		English	Math	Reading	Science	Comp.		Finalists	Semi-finalist	Commended Student	National Hispanic Scholars
2014	612	612	586	2014	27.0	26.6	26.8	26.4	26.8	2014	3	3	10	3
2015	585	600	561	2015	26.2	26.0	26.4	26.1	26.3	2015	4	4	11	0
2016	579	612	599	2016	27.2	25.9	27.3	26.1	26.7	2016	3	3	5	2

**Higher Education**

Last year 99% Regis Jesuit graduates enrolled in four-year colleges or universities; 64% of these were out-of-state, 36% in-state, 53% enrolled in public schools and 47% in private schools. The graduates matriculated to the following schools:

American University	Indiana University at Bloomington	Sarah Lawrence College	University of Colorado at Denver
Arizona State University	Lafayette College	Seattle University	University of Dayton
Baylor University	Lehigh University	Spring Hill College	University of Denver
Benedictine College	Lewis University	St. John's College	University of Kansas
Brigham Young University, Idaho	Loyola Marymount University	St. John's University - Queens Campus	University of Kentucky
Bucknell University	Loyola University Chicago	Stetson University	University of Missouri Columbia
California Polytechnic State University, San Luis Obispo	Loyola University Maryland	Texas Christian University	University of Nebraska at Lincoln
Carroll College (Montana)	Marquette University	The Catholic University of America	University of North Dakota
Chadron State College	Metropolitan State University of Denver	The Culinary Institute of America	University of Northern Colorado
Chapman University	Miami University, Oxford	The George Washington University	University of Notre Dame
Clemson University	Michigan State University	The New School	University of Oregon
Colgate University	Montana State University, Bozeman	The University of Arizona	University of Pennsylvania
College of Charleston	Murray State University	The University of Montana, Missoula	University of San Diego
Colorado College	New York University	The University of North Carolina at Chapel Hill	University of San Francisco
Colorado School of Mines	Northern Arizona University	The University of Oklahoma	University of Southern California
Colorado State University	Northwestern Preparatory School	The University of Tampa	University of St. Thomas
Community College of Denver	Pennsylvania State University	The University of Texas, Austin	University of Utah
Creighton University	Regis University	Tulane University	University of Vermont
DePaul University	Rensselaer Polytechnic Institute	University of Alberta	University of Washington
Emerson College	Rockhurst University	University of California, Santa Barbara	Utah State University
Florida State University	Sacred Heart University	University of Colorado at Boulder	Villanova University
Georgetown University	Saint Louis University	University of Colorado at Colorado Springs	Wake Forest University
Gonzaga University	Saint Mary's University of Minnesota		Washington University in St. Louis
Grand Canyon University	Santa Clara University		Western State Colorado University
Harvard University			
Hendrix College			