

6300 S. Lewiston Way  
Aurora, CO 80016  
Phone: 303.269.8100  
Fax: 303.221.4772  
School Code: 060082

**Founded**

Boys Division 1877  
Girls Division 2003

**Type:** Private, Jesuit  
Roman Catholic  
College Preparatory

**Enrollment**

725 Girls  
166 Seniors

**Faculty:** 103

56 Master's, 3 PhD's

**President**

Dave Card, MPA

**Administration**

**Principal**

Gretchen Kessler, MS Ed.  
MS Admin.

**Academic Assistant Principal**

Ryan Williamson, MAT

**Assistant Principal for  
Faculty and Curriculum**

Tim Bauer, MA

**Dean of Students**

Kelli Lotito, MS

**College Counselors**

Monica Huggins, (A-D) [mhuggins@regisjesuit.com](mailto:mhuggins@regisjesuit.com)

Sarah Hatfield, (E-J) [shatfield@regisjesuit.com](mailto:shatfield@regisjesuit.com)

Mike Delaney, (K-M) [mdelaney@regisjesuit.com](mailto:mdelaney@regisjesuit.com)

Mark Giesmann, (N-Sm) [mgiesmann@regisjesuit.com](mailto:mgiesmann@regisjesuit.com)

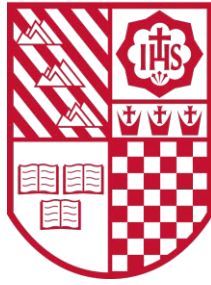
Laura Hall, (Sn-Z) [lhall@regisjesuit.com](mailto:lhall@regisjesuit.com)

**College Counseling Assistant**

Bonnie Stanford  
303.269.8121 [bstanford@regisjesuit.com](mailto:bstanford@regisjesuit.com)

**Registrar**

Liane Cattelino 303.269.8116  
[lcattelino@regisjesuit.com](mailto:lcattelino@regisjesuit.com)



# REGIS JESUIT HIGH SCHOOL

## 2016-2017 School Profile

### GIRLS DIVISION

**Mission**

Regis Jesuit High School—a Catholic educational community—engages the gifts of young men and women in a single-gender environment, fosters faith in Jesus Christ and promotes justice and mercy, develops critical minds and nurtures compassionate hearts to serve others—all for the greater glory of God.

**Service**

The service program builds upon itself so that each year students are encouraged to expand and deepen their commitment to be women with and for others. Upon graduation an RJHS student will have completed at least 175 hours of service with an emphasis on service with the poor and marginalized.

**Academic Program**

Admission to Regis Jesuit High School is based on previous academic record, entrance exam scores, and teacher recommendations. All students follow a rigorous academic track of college preparatory classes.

**Theology**

The Theology program at Regis Jesuit is an integral part of our school's identity, as it embodies our mission to develop the entire person. As seniors, students may take both theology classes in one semester.

**Discipline**

Disciplinary matters are internal school issues. It is our policy to refrain from commentary on student disciplinary matters. Please contact the student directly.

**Graduation Requirements**

English	4.0 credits	Social Studies	3.0 credits	Computer Science	0.5 credits
Mathematics	4.0 credits	Classic & Modern Language	2.0 credits	Humanities & Arts	0.5 credits
Theology	4.0 credits	Physical Education	1.0 credits	Electives	5.5 credits
Science	3.0 credits	Communications	0.5 credits	Community Service	175 hours

**Advanced Placement and Honors Classes:**

We have a policy of open enrollment at Regis Jesuit Girls Division for enrollment in Honors and AP courses. However, in certain instances, there are course prerequisites required. Students in AP courses are not required to take the AP exams, but are strongly encouraged. Honors courses require the students to meet objectives higher than those in non-honors courses.

Advanced Placement	Advanced Placement	Honors Classes
<b>Art</b> AP Studio Art (Design) AP Studio Art (Drawing)	<b>Social Studies</b> AP Art History AP Comparative Government AP European History AP U.S. Government & Politics AP U.S. History AP World History	Honors English Honors British Literature Honors Algebra 1 Honors Geometry Honors Algebra 2/Trigonometry Honors Pre-Calculus/Intro to Calc.
<b>English</b> AP English Language & Composition AP English Literature & Composition	<b>World Language</b> AP Chinese Language and Culture AP French Language and Culture AP Latin AP Spanish Language and Culture AP Spanish Literature	Honors Biology Honors Chemistry Honors French 2 Honors French 3 Honors Latin 2 Honors Latin 3 Honors Spanish 2 Honors Spanish 3
<b>Math</b> AP Calculus AB AP Calculus BC AP Statistics		
<b>Science</b> AP Biology AP Chemistry AP Physics 1 AP Physics 2 AP Physics C		

**Accreditation:** AdvancEd

**Memberships:** Jesuit Schools Network, National Catholic Education Association, Jesuit High School College Counselors Association, Colorado Council on High School/College Relations, National Association of College Admissions Counselors

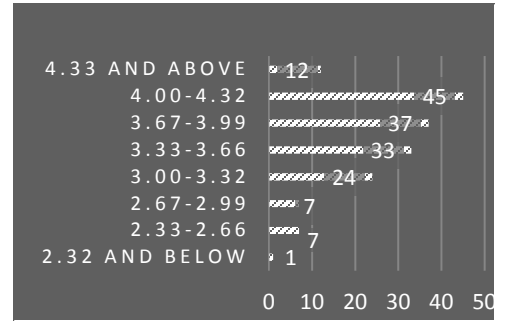
Regis Jesuit does not rank its students. Instead, we provide this chart with information about their 6<sup>th</sup> semester grades for the 166 members of the Class of 2017.

## 6<sup>th</sup> Semester GPA's

### GPA

Regular and Honors classes use this 4.0 scale: AP classes are weighted by one point.

- A+(97-100)=4.33    A(93-96)=4.0    A-(90-92)=3.67
- B+(87-89)= 3.33    B(83-86)=3.0    B-(80-82)=2.67
- C+(77-79)= 2.33    C(73-76)=2.0    C-(70-72)=1.67
- D+(67-69)= 3.33    D(63-66)=1.0    D-(60-62)=0.67
- F (00-59)= 0.00    K = F for 1<sup>st</sup> semester



**Advanced Placement Testing:** Last year, 260 students took 449 AP tests. 75% of those taking an AP test scored 3, 4 or 5 on the exam.

**Assessment:** Test scores reflect all testing results, not just the highest test scores. Test scores are mean test scores.

### SAT Scores

	Critical Reading	Math	Writing
2014	574	551	568
2015	567	537	557
2016	553	535	579

### ACT Scores

	English	Math	Reading	Science	Comp.
2014	26.3	23.5	26.5	23.8	25.1
2015	26.2	24	25.8	24.3	25.2
2016	26.8	24.7	26.7	24.9	25.9

### National Merit

	Finalists	Semi-finalist	Commended Student	National Hispanic Scholars
2014	2	4	2	2
2015	0	1	4	1
2016	1	1	7	4

### Higher Education

Last year 98% of Regis Jesuit High School Girls Division graduates enrolled in 4 year colleges or universities; 65% of these were out-of-state, 35% in-state, 47% enrolled in public schools and 53% in private schools. The 2016 graduates were accepted at the following and matriculations are in **bold**.

University of Alabama Allegheny College <b>American University</b> <b>Arizona State University</b> <b>University of Arizona</b> Bard College <b>Baylor University</b> <b>Benedictine College</b> Berry College <b>Biola University</b> Birmingham College Boise State University <b>Boston College</b> <b>Butler University</b> Cal Poly, San Luis Obispo U California, Los Angeles U California, San Diego <b>U of Cal, SantaBarbara</b> Carroll College (Montana) Case Western University Catholic U of America Centre College Chapman University Christopher Newport U <b>Clemson University</b> <b>U Colorado at Boulder</b> <b>U Colorado at CSprings</b> <b>U Colorado at Denver</b> Colorado Christian U Colorado College <b>Colorado Mesa U</b> <b>Colorado School Mines</b> <b>Colorado State U</b> Columbia C, Chicago	C College of Aurora <b>C College of Denver</b> <b>Creighton University</b> University of Dallas <b>Davidson College</b> University of Dayton Denison University University of Denver Drake University Drexel University Duquesne University <b>Eckerd College</b> <b>Elon University</b> Emory University Fairfield University <b>Fordham University</b> Fort Lewis College <b>Franciscan University</b> Franklin U, Switzerland <b>University of Georgia</b> <b>Gonzaga University</b> <b>Grand Canyon University</b> Grinnell College Hastings College High Point University College of the Holy Cross Howard University U of Illinois at Chicago Indiana U at Bloomington <b>University of Iowa</b> <b>John Carroll University</b> Kalamazoo College Kansas State University <b>University of Kansas</b>	University of Kentucky <b>Knox College</b> Lewis & Clark College <b>Liberty University</b> <b>Loyola Marymount U</b> <b>Loyola University Chicago</b> Loyola University Maryland Loyola U, New Orleans Lynchburg College <b>Marquette University</b> University of Mary U Maryland, College Park <b>U of Mass., Amherst</b> Marymt. Manhattan College <b>Metro State U of Denver</b> <b>Miami University, Oxford</b> University of Miami Michigan State University <b>University of Michigan</b> U Minnesota, Twin Cities <b>University of Mississippi</b> MO U of Science and Tech <b>U of Missouri, Columbia</b> <b>Montana State U, Bozeman</b> U of Montana, Missoula U Nebraska at Lincoln <b>U Nevada, Las Vegas</b> <b>University of New Mexico</b> <b>New York University</b> <b>UNC at Chapel Hill</b> Northeastern University <b>Northern Arizona U</b> <b>U of Northern Colorado</b> <b>University of Notre Dame</b> <b>Oberlin College</b>	Occidental College Ohio Wesleyan University Oklahoma Baptist U <b>U of Oklahoma</b> <b>University of Oregon</b> <b>Otterbein University</b> Pepperdine University <b>Pickens Tech College</b> Pitzer College <b>Pomona College</b> University of Portland Providence College <b>U of Puget Sound</b> Purdue University <b>Regis University</b> Rhodes College Rice University Rockhurst University Sacred Heart University College of Saint Benedict Saint Joseph's University <b>Saint Louis University</b> Saint Mary's College St. Mary's C of California <b>Saint Michael's College</b> Samford University <b>University of San Diego</b> U of San Francisco <b>Santa Clara University</b> Sarah Lawrence College Seattle Pacific University <b>Seattle University</b> Seton Hall University Skidmore College	University of South Carolina Southern Methodist U Spring Hill College St. Catherine U.- St. Paul <b>St. John's University</b> University of St. Thomas Syracuse University The University of Tampa U Tennessee, Knoxville <b>Texas Christian University</b> <b>The U of Texas, Austin</b> The Ohio State University Trinity University Truman State University Tufts University Tulane University University of Tulsa <b>United States Military Academy - Army</b> US Naval Academy University of Aberdeen University of St Andrews Villanova University Washburn U of Topeka Washington State University Washington U in St. Louis <b>University of Washington</b> West Virginia University Westmont College Willamette University <b>U of Wisconsin, Madison</b> The College of Wooster <b>University of Wyoming</b> <b>Villanova</b> <b>Xavier University</b>
---	--	--	--	---